

DR-4080U Specifications

Type	Universal
Document feeding	Flatbed with built-in ADF (Auto Document Feeder)
Document size (ADF)	Width: 106mm - 306mm (4.2" x 12.0") Length: 148mm - 432mm (5.8" x 17.0")
Document size (flatbed)	Maximum W x L: 298 x 432mm (11.7" x 17.0")
Document thickness	Automatic sheetfeeding: 0.060 - 0.15mm Manual sheetfeeding: 0.050 - 0.15mm
ADF capacity	200 pages
Scanning element	Front: CCD / Back: CIS
Light source	Front: green cathode tube / Back: green/red LED
Optical resolution	400dpi
Scanning resolution	Scalable from 100 to 600dpi in 1dpi steps
Output image	Binary: binary, dither, error diffusion / Grayscale: 2-bit, 3-bit, 4-bit, 8-bit
Scanning modes	Simplex or duplex scanning
Scanning speeds (ADF)*	100dpi: 55ppm (A4 portrait) / 44ppm (A3) 200dpi: 45ppm (A4 portrait) / 36ppm (A3) 300dpi: 31ppm (A4 portrait) / 22ppm (A3) 400dpi: 24ppm (A4 portrait) / 14ppm (A3) 500dpi: 14ppm (A4 portrait) / 8ppm (A3) 600dpi: 11ppm (A4 portrait) / 6ppm (A3)
Scanning speeds (flatbed)*	100dpi: 1.3 seconds (A4 portrait) / 1.5 seconds (A3) 200dpi: 1.5 seconds (A4 portrait) / 2.0 seconds (A3) 300dpi: 2.1 seconds (A4 portrait) / 2.9 seconds (A3) 400dpi: 2.5 seconds (A4 portrait) / 3.6 seconds (A3) 500dpi: 3.2 seconds (A4 portrait) / 5.0 seconds (A3) 600dpi: 4.0 seconds (A4 portrait) / 6.8 seconds (A3)
Data compression	MH, MR, MMR, JBIG (2-bit and 3-bit grayscale can be compressed only with JBIG)
Interface	SCSI-II
Scanner drivers	ISIS, TWAIN
Other functions	Barcode Recognition (Code39, Interleaved 2 of 5, Codabar) Patch Code Recognition (Type 2, Type 3, Type T) Auto Separation (text/photo), Mirror Image, Reverse Image, Noise Reduction
Power requirements	AC120V 50/60Hz, AC220 - 240V 50/60Hz
Power consumption	135w (max.)
Operating environment	15 - 30°C, 30 - 80%RH
Dimensions (W x D x H)	464mm x 732mm x 328mm
Weight	Approx. 31kg
Optionals	Imprinter, Red Lamp

* Scanning conditions: Simplex scanning, MMR compression, w/o barcode & patch code recognition, imprinter printing, and deskew data reading.

Specifications are subject to change without notice. Product names appearing in this brochure are trademarks and/or registered trademarks of their respective owners.

Canon

CANON ELECTRONICS INC.

1248, Shimokagemori, Chichibu-shi, Saitama 369-1892, Japan

CANON U.S.A. INC.
New York Office/Headquarters: One Canon Plaza, Lake Success, NY 11042, U.S.A. Tel: (516) 328-5000

CANON CANADA, INC.
Toronto Office/Headquarters: 6390 Dixie Road Mississauga, Ontario L5T 1P7, Canada Tel: (905) 795-1111

CANON EUROPA N.V.
Bovenkerkerweg 59-61, P.O.Box 2262, 1180 EG Amstelveen, The Netherlands Tel: (020) 545-8545

CANON LATIN AMERICA, INC.
6505 Blue Lagoon Drive, Suite 325, Miami, Florida 33126, U.S.A. Tel: (305) 260-7400

CANON AUSTRALIA PTY. LTD.
1 Thomas Holt Drive, North Ryde, Sydney, N.S.W. 2113, Australia Tel: (02) 9805-2000

CANON SINGAPORE PTE. LTD.
79 Anson Road #09-01/06, Singapore 079906 Tel: 532-4400

CANON HONGKONG COMPANY LTD.
9/F, The Hong Kong Club Building, 3A Chater Road, Central, Hong Kong Tel: 2739-0802

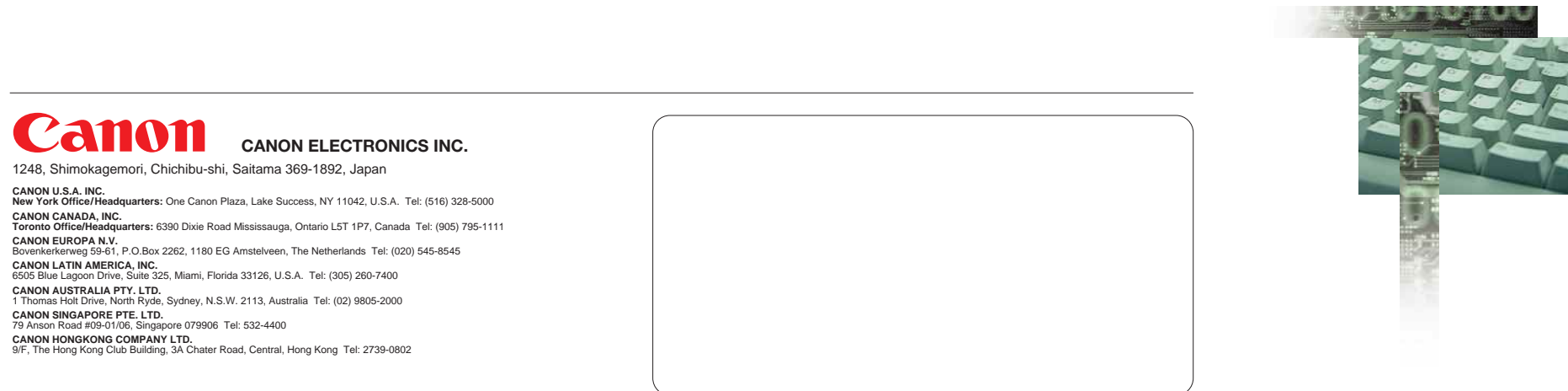
Canon

DR-4080U



THE SCANNER FOR EVERY SITUATION

Cover all of your document scanning needs with Canon's universal scanner, the DR-4080U. In addition to its twin benefits of 45ppm high-speed scanning and high-quality flatbed scanning, the DR-4080U also offers easy operation plus other productivity-boosting capabilities.



The key to optimizing your office's document management: The DR-4080U, from Canon.



Whether you need to quickly scan a large stack of papers or convert book pages into image data, you can rely on the Canon DR-4080U to provide you with a convenient and user-friendly solution each time. The DR-4080U is designed to meet a broad range of user needs, and offers high-quality results with every task. Its wide variety of specialty functions also make it the ideal tool for day-to-day document management.



Versatility

Fast scanning plus duplexing



In its primary sheet-feeding configuration, the DR-4080U is a high-speed scanner that efficiently handles batch processing jobs. As many as 200 sheets of standard LTR/A4-size paper can be loaded onto its Automatic Document Feeder (ADF) tray at once, and – with just a press of the Start button – each sheet is fed quickly and smoothly through the unit. Throughput for LTR/A4-size documents is 45 pages per minute in portrait mode and 57 ppm in landscape mode.* The DR-4080U also features a duplexing capability for simultaneous scanning of both sides of the page – a process which yields production rates of up to 108 images per minute in landscape mode.*

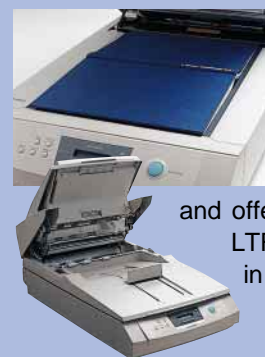
* 200 x 200 dpi

Diverse paper-feeding capabilities

Various expert feeding functions enable the DR-4080U to optimally handle batches of mixed sizes or paper weights. When papers of different sizes are contained in the same stack, the scanner can be set to automatically detect the length or width of each page. And when your stack has material of varying paperweight, automatic paper-thickness recognition can be put to work. To ensure that no images get missed, the DR-4080U's double-feed detection alerts you when more than one sheet has been pulled into the unit.



11" x 17"/A3-size flatbed scanning



One of the DR-4080U's biggest advantages is that it can also be used as a flatbed scanner. This flexibility is ideal when books or other bound material – or even important papers which are too delicate to be fed through the ADF – need to be scanned. The DR-4080U accepts documents of up to 11" x 17"/A3-size, and offers scanning speeds up to 1.5 seconds for standard LTR/A4-size documents. In addition, the ADF can be left in an upright position to facilitate flatbed scanning use.

Quality

Image-enhancement technology



The DR-4080U's image-processing repertoire does an outstanding job of achieving top scanning results for the full range of document management applications, from electronic filing to optical character recognition. The DR-4080U is capable of producing binary or grayscale scans at resolutions ranging from 100dpi up to 600dpi, and both grayscale level and scan resolution are user-selectable. Among the scanner's many other imaging controls are brightness, contrast, white level, noise reduction, and image inversion. To make scanning as easy as possible, most functions are accessible through a user-friendly control panel located on the scanner's front panel. And, for further convenience, customized settings can be stored in memory for instant recall through the control panel.

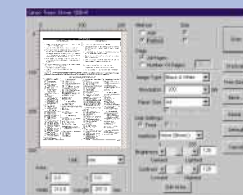
Barcode and patch code processing



Barcode decoding is a standard feature with the DR-4080U. This valuable feature enables the unit to read barcodes on scanned documents and then transfer this data to other applications. Compatible barcode formats include Code39, Interleaved 2 of 5, and Codabar. Another standard feature is support for patch code processing (Type 2, Type 3, and Type T).

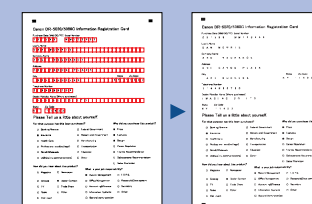
ISIS & TWAIN drivers

The DR-4080U's software package comes complete with ISIS and TWAIN drivers, both of which can be used in Windows 95, Windows 98, and Windows NT 4.0 environments. Each driver provides access from your PC to additional functions such as Fit to Page, Slow Feeding, and Automatic Recognition of the text/photo areas of a scanned document.



Optional features

A pair of special options allows the DR-4080U to be customized to your specific document management needs. The optional LED sensor improves the efficiency of forms processing work by filtering out red lines and areas printed on documents from the image data. The Imprinter option prints serial numbers or other user-designated messages on the front of each scanned piece of paper.



Easy user-maintenance



Another way the DR-4080U contributes to your office's workflow is by minimizing any downtime caused by basic maintenance tasks such as roller replacement and roller cleaning. Messages which indicate the roller status are helpfully displayed on the DR-4080U's operation panel, and users can complete the required maintenance with ease.

